

TURF MATTERS

For all sports turf professionals in golf, football, rugby, cricket, horse racing, independent schools, universities and local authorities

June-July 2016 | £3.95

www.turfmatters.co.uk



Not good vibrations

Take care, page 12



Campey on tour

Lowdown, page 4



Putting pedal to the metal

Go Team Kubota, page 6

HOW TROON TOOK ON THE WEATHER



The Open Championship 2016

CHANGING THE LANDSCAPE FOR TRACTOR DEALS.



**FREE 5-YEAR OR
UP TO 2,000 HOUR WARRANTY**

Worth up to £2,000, providing total reassurance and peace of mind.

**GENEROUS
LOADER OFFERS**

Huge savings available from one of the world's leading manufacturers of front loaders.

**3 YEARS
INTEREST FREE FINANCE**

Cash Match available – upgrade to a new Kubota without increasing your existing payments*

*Subject to terms and conditions

For Earth, For Life
Kubota

**OFFER AVAILABLE
ON THE MGX SERIES
AND M9960.**

www.kubota.co.uk

For a short while only, you can take advantage of these 3 great offers. But hurry – only available while stocks last. For more information about Kubota's diverse range of world-class groundcare machines and aftersales support service, visit www.kubota.co.uk or call **01844 873190**.

TURF
MATTERS

**TOWN HALL
HEROES**

Here at Turf Matters we are determined to applaud the great work that this country's local authorities do – particularly with the budget cuts.

Does your council do a fine job in maintaining its amenity space and sporting facilities? Does it take time to landscape its roundabouts and boundaries? Are its pitches well draining and cut regularly to the optimum height?

If the answer is yes then please let us know and we will try to showcase the work that it does.

If you would like to nominate your own local authority, or one which you as a business has as a client please contact us at Turf Matters (email: scott@turfatters.co.uk). Alternatively, a local authority may nominate itself.

Let's ensure that the work of the much maligned local authorities receives the credit they deserve.

TURF MATTERS

The grass will still grow

I went to sleep in the early hours of June 24 with a mild sense of relief based on the views of pollsters – and woke up to a whole new world and a feeling of what on earth have we done...

I'd always been of the belief that there are certain decisions which are just too complex for the British General Public to deal with and it would seem that many had their vote influenced by distorted facts, myths and prejudices. However, we are where we are and we must hope that we are all still standing when the implications of Brexit start to leave their mark.

I have no doubt that the many small and medium sized companies within our industry sector will be able to cope with the demands of being outside the free market, but how will they deal with the strain imposed by the layers of paperwork which will undoubtedly now be required to trade with our closest neighbours?

I have no doubt that local authorities will find a way of ensuring their obligations to maintaining open spaces will be met but at what cost?

I have no doubt that the majority of golf and sports clubs will keep operating, but with the cost of living expected to rise and the standard of living expected to drop, how many members will they lose because their leisure budget has been diverted to cover more basic needs.

I have no doubt that schools and universities will continue to service their playing fields and sports grounds as healthy living will continue to be high on the agenda, but will those budgets be maintained at even the current reduced levels?

I have always thought that the ideal job to have during a recession is that of barber, as whatever happens hair will continue to grow. In the broadest of terms we are in a similar position – grass will keep on growing. It is just that the money required to ensure it is done to the high standards possible these days, many not be there anymore.

Scott MacCallum, Editor

 You can follow me on Twitter @TurfMatters



Latest developments in aeration: Pages 28-31

COVER PHOTOGRAPH: ©AELTC/Jon Buckle

Distributed every two months to sports turf professionals, independent schools, universities, local authorities and buyers of turfcare machinery and products.

Editor: Scott MacCallum
scott@turfatters.co.uk

Design and Production Editor: Tim Moat
tim@turfatters.co.uk

To advertise in Turf Matters,
email scott@turfatters.co.uk

To subscribe, go to
www.turfatters.co.uk

Turf Matters is published by Straight Down the Middle Communications Ltd.

All material © Turf Matters magazine 2016.

No part of this publication may be reproduced in any form whatsoever, either for sale or not, without the written permission of the publisher. Information contained in Turf Matters is published in good faith and every effort has been made to ensure its accuracy. Turf Matters can accept no responsibility for any error or misrepresentation. All liability for loss, disappointment, negligence or other damage caused by reliance on information contained in Turf Matters or in the event of any bankruptcy or liquidation or cessation of trade of any company, individual or firm mentioned is hereby excluded.

Printed by Warners Midlands PLC.



Inside this issue

News	4-10
Tea Break Teaser	11
Vibration white finger	12-15
Royal Troon	16-21
Working with Troon	22-23
Aeration	28-31
News Extra	24-27, 32
Buyers' Guide	33
Golfing Nobody's Blog	34-35

Check out our website:

www.turfatters.co.uk

Next magazine distributed September 2016

Campey on tour

UK & Ireland Pitch Renovation Tour visited the home of the Lancashire Football Association, in Leyland, with a wide variety of grassroots and professional groundsmen coming to the event.

Over 80 groundsmen from rugby and football, club officials, contractors and council representatives came to the all-day event.

The importance of the tour and its aim of improving the quality of Grassroots natural turf sports pitches in the UK & Ireland was evident among the guests, many of whom realised what small changes could be made to their own programme to make a massive difference to their surfaces.

The chance to learn and develop a further understanding of the different practices that can be carried out was taken by Judith Hayhurst, from Lancashire County Council, who wanted to find out how they could improve their school playing fields.

"It's been a very well organised and enjoyable day. Having the chance to be talked through the machines before getting the opportunity to see how well they work is invaluable."

The combination of the seminars and practical demonstrations aim to educate grassroots groundsmen in the most innovative industry techniques, showing how standards of local pitches can improve dramatically by implementing small changes to



'A very well organised and enjoyable day'

maintenance practices, regardless of budget restraints.

There are many grants available from all the different associations as well as finance packages designed to help spread the cost of new machinery.

These events show the best of the equipment available in today's extremely competitive market and those which give greatest value for your investment.

Daten Football Club, who attended the Leyland event, have already used funding to purchase a New Holland Boomer 25 Tractor and a Sisis Quadraplay from Campey, and were at the event with a view to further their

equipment, as club chairman Stuart Nightingale explained.

"We started with a maintenance grant through the Football Foundation to get the tractor and Quadraplay, and we've secured another grant to improve our changing rooms and facilities, so the funding is there," he said.

"As we look to add more teams we know the wear on the pitch will increase, and our groundsmen, Ian Trantum, suggested we come along today to look at the modern equipment that's available and I'm really glad we did, because we can now go back to the club and explain what we need to do."



Course Manager Adam Moss with Lely Turfcare's Jon Lewis

All change for The Henley

The Henley, which until recently was known as Henley Golf and Country Club, is entering a new period of its young life. A new name as part of a comprehensive rebrand, a new Course Manager and its first ever machinery package deal with Toro sees this 250 acre club with a new and determined focus to achieve its full potential.

"This is a young course, which for one reason or another hasn't been pushed. There's a lot of potential in these 250 acres and 18-holes and my job is to help realise that potential," said Adam Moss, Course Manager.

"There wasn't the proper equipment to do a good job to start with; in fact when I first went into the shed I wondered where all the equipment had gone!"

The aim is to create a premier facility and with that in mind, Adam looked into new machinery to suit the parkland course.

"We have a five-year plan with the aim to create a premier golf club for the Midlands. We needed machines that would suit the site and bring out the best in it. Having used Toro before I was confident they could cope with its challenges and I could rely on them to help get the job done."

The 28-strong fleet is made up of greens, grounds and fairway mowers, aeration equipment, UTVs, sprayers and two ever-popular TYM T503 Tractors. Advising Adam on the mix of machinery was Lely Turfcare's Jon Lewis, along with local dealer Redtech.

Former management trainee works his way up to top job

Jonathan Henry, pictured, has been appointed the new Managing Director of John Deere Limited in the UK and Ireland. He takes over from Antony Scott, who has elected to retire



after 40 years of distinguished service with the company.

Jonathan joined as a management trainee in July 1993, following an HND in mechanisation, planning and business

management at the Scottish Agricultural College, Auchencruive, and a spell in the service department of an agricultural dealership.

After fulfilling a number of roles within the company from early 2009, Jonathan moved to Germany and the US, chiefly supporting the launch of the 6R to 8R Series tractors. Since May 2015, he has been planning director for Deere's global crop harvesting business.

Antony was appointed managing director of John Deere Limited in the UK and Ireland in July 2014, succeeding Richard Johnson. He joined the company in December 1975, also as a management trainee and served at Langar in positions of increasing responsibility including territory manager, division credit

manager, parts and wholegoods manager, distribution manager and division sales manager. From 2011, he was responsible for the region's Dealer of Tomorrow strategy.

"Throughout his career, Antony has had an impact on thousands of customers, dealers and employees," said Jim Orr, John Deere's vice president, sales and marketing for Region 2.

"He is known to many as a consummate business professional and team player, fully committed to the brand. We thank him for his significant contributions to John Deere over his career – particularly so in the year the branch is celebrating its 50th anniversary in the UK & Ireland – and wish him a long, healthy and happy retirement."

Small but perfectly formed...

Head Groundsman at George Heriot's School, Simon Theurer, describes the facilities at one of Scotland's most distinguished schools as 'small'. But it hosts three full size and two junior sized rugby pitches; four full size hockey surfaces; an astro hockey pitch and 2 cricket squares – a site totalling 22 acres is hardly small! Inaugurated some 350 years ago, George Heriot's School today is an independent co-educational day school to children aged 3-18 from in and around Edinburgh.

Despite 30 years of experience as a groundsman in the private school environment, 21 of those at George Heriot's, Simon and his team of three full time staff have had to enlist the help of contractors from time to time to maintain top quality surfaces.

"We had one guy come in specifically to scarify the grandstand rugby pitch, which worked really well. However, it was quite costly and we began to think could we achieve, in some way, that level of result ourselves? If we could then perhaps other areas of the facility could benefit too. So, when we were given a grant by the school to expand our fleet of machinery, a scarifier was top of our wish-list. After researching and trialling a number of models we settled on the Turf Tidy 2300 from Charterhouse Turf



Machinery, which we took delivery of a year ago.

"It just suited our needs the best. It gave us the level of finish we wanted while offering the fine level of height adjustment we required to be able to use the machine on multiple surfaces. It's been in constant use since we've had it, initially for scarification then with the optional brush attachment fitted we cleared leaves and debris as well as power brushing our surfaces during autumn and winter. With the hockey

pitches especially, it is critical we provide a true playing surface. All areas look clean and tidy and at the end of February we put the scarification unit back on ready for spring renovation work."

"We are delighted with the unit, it's easy to operate and has fantastic collecting capabilities. The high lift to facilitate emptying is also fantastic as it means we can leave the trailer pitch-side, tipping the matter into it and taking it away without having to drive the trailer over the surface."

Head Groundsman Simon Theurer and his team at George Heriot's School

Pedal to the metal for Team Kubota



A team of volunteers from Kubota UK raised the bar in a bid to pick up the coveted Mix96 Tour de Vale trophy, as they prepare to cycle their way to victory in the charity event held in June.

Taking on the challenge for the third year in a row, it involves cycling 25km, 60km, and 100km courses, joining 2,000 riders pedaling their way across Buckinghamshire in the hope to raise money for a good cause and take home the trophy. The trophy is awarded to the team that raises the most for the benefit of Wheel Power, a national charity

dedicated to providing opportunities for disabled people to help them live healthy active lifestyles.

Over the past two years Team Kubota has raised £2,300 for Wheel Power and this year the team aim to beat their first year's fundraising total of £1,500. The money raised will help Wheel Power match the 2015 total of £62,000.

Dave Roberts, Managing Director of Kubota UK, said: "It's fantastic to be taking part in this year's Mix96 Tour De Vale, and I am extremely proud of our team for volunteering their time for such a fantastic cause.

"Kubota dealers, local businesses and our peers in the tractor, groundcare and construction industries were all very generous with donations last year and we hope that they will continue to support us again this year to help raise as much as we can for Wheel Power."

To help Team Kubota smash its fundraising target and donate to a fantastic cause, head over to <http://uk.virginmoneygiving.com/team/KubotaUK> to find out more. And look out for an update in the next issue of Turf Matters.

Sorting drainage that refused to drain



The push-up clay construction of the greens of Droitwich Golf Club meant that Course Manager Gary Watkins had some real problems with drainage, especially in winter in particular, enough for Phil Day Sports to be called in to improve the situation.

"There were five or six greens, at the bottom of banks that just did not drain," explained Gary.

"Three in particular were continuously laying wet which meant

the majority of the time golfers ended up playing on temporary greens. My team and I did all we could to manage the thatch and get water through the profile, but once it got to the clay base it wasn't going anywhere. This convinced the committee the best way forward was to install some drainage."

"Phil Day Sports had been out in the past and done some jobs for us, so we asked Toby to come in and look at the problem and see what PDS could do. We knew their work would be efficient and to a high standard as well as price competitive."

The PDS solution was to install a main carry drain as none of the affected greens were near a positive drain outlet. Primary land drainage was then added on the 4th, 13th and 14th greens. After

removing the turf, 60mm diameter pipe drains were installed at two metre spacing and 450mm depth. The drains were then connected up using purpose made junctions to the carrier drain. They were then backfilled with gravel and topped with a 200mm sand layer before finally the turf was re-instated.

All three greens were completed within a week and back in play within another three!

"The whole process was smooth and straightforward. The greens committee were so pleased with the work that they've already agreed to have another three greens done at the end of this year. The overall aim is to sort all of our problem greens and we won't hesitate to work together with PDS to achieve this."

Limagrain gives perfect results

When Mike Kemmett, Grounds Manager at Haberdashers' Aske's Boys' School, in Hertfordshire, wasn't getting the desired results from his previous grass seed, he decided to look elsewhere. His research led him to Limagrain and now he believes he has finally found what he was looking for.

As well as Haberdashers' academic prowess, sport also plays an integral part of school life. Students can thrive within the excellent sports facilities the school has to offer; which includes 12 rugby and/or football pitches, two all-weather hockey pitches, three grass cricket squares, three artificial cricket wickets, the Solai indoor cricket centre, a double size sports hall, indoor swimming pool, gymnasium, fitness suite, 400 metre grass running track with synthetic sprint track and jump/throw areas, and a shooting range.

The man tasked with keeping the sporting facilities in top condition is Mike, who tends to the grounds with eight dedicated members of staff.

Ever the perfectionist, Mike insists on using only the finest products and after not achieving the results he desired with his previous grass seed, he decided to conduct thorough research into making sure he had the best product on the market.

"I just wasn't getting the results I wanted – slow establishment and I didn't get the colour or the density. I had always known of Limagrain and I wanted to hear from people who had used it – so I asked around. Andy Matthews, at Clifton College, and Adam King, from Radley College, were quick to recommend Limagrain's MM60 and MM50 without hesitation.

"After purchasing some I actually conducted a trial between three leading grass seeds, one of which was MM60, just to see which one was the best. Initially you couldn't see a lot of difference, but after a while Limagrain really came into its own. I found that the MM60 would just sit on the pitch a lot more while the others would kick out more easily and lose their colour."



Mike is now in his third year of using Limagrain's MM50 and MM60 and this summer, the products put the 'icing on the cake' to some major pitch improvements at Haberdashers'. He certainly had his work cut out as he oversaw a half a million pound project to install four brand new rugby pitches and a cricket outfield, which included a new drainage system and borehole with the means to irrigate the pitches. When the project reached the point of seeding, there was only one option for Michael.

"Within four or five days, with watering, it was up and running and was a beautiful green colour."

How's that:
Grounds Manager
Mike Kemmett
finally found what
he wanted

High on Power... Low on Co2

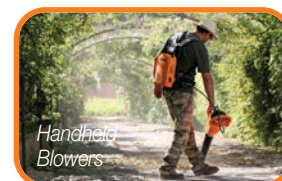
Pellenc Tools
now available
with a
**3 Year
Warranty**



Also available...



Brushcutters



Handheld
Blowers

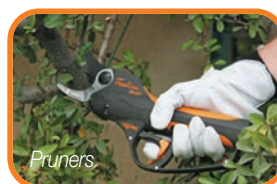
One Battery, Multiple Options



Hedge
Trimmers



Chainsaws



Pruners



Pole Saws

**“They are extremely lightweight
with low noise and vibration levels.
Pellenc ticks all of our boxes.”**

Peter Anderson, Machinery Maintenance Engineer at RHS Wisley

The Ultra Lithium Battery provides constant power and an operating range display, which indicates the remaining power level in real time. This provides between half a day and a full day of work depending on the type of tool used.

ETESIA
Seeing is believing

Tel: 01295 680120 • email: sales@etesia.co.uk
www.etesia.co.uk

f Etesia UK @EtesiaUK EtesiaUK

Re-alignment at GreenMech

GreenMech have begun a process of dealer re-alignment with the first appointments covering the Midlands, North of England and Scotland. Lloyd Ltd, The Burdens Group, Turner Groundscare Machinery and Hamilton Brothers have joined their comprehensive nationwide coverage.

In Scotland, Hamilton Brothers, and sister company, Ross of Lanark, has been servicing the needs of the Agricultural, Groundcare and Construction industries across West and Central Scotland from three depots covering the areas of Bishopston, Tarbolton and Campbeltown – together they offer over 80 years of experience.

Lloyd Ltd will cover the South of Scotland and North of England with branches across the region. North Wales and part of the Northwest of England will now have Turner Groundscare Machinery in Chester to supply GreenMech chippers, along with a wide range of groundscare products from leading manufacturers



such as John Deere, Honda and Stihl.

Further south in Lincolnshire, The Burdens Group who have many years' experience in the agricultural, construction, produce handling and groundcare markets, have also become dealers for their part of the country. Commenting

on the expansion, Sales Director for GreenMech. Martin Lucas said, "All of our new partners have proven track records in their respective areas and are renowned for providing quality sales and customer service. We are excited about offering a better, more localised service across these regions."

Bright future for Greg at Fulwell GC

Sam Evans, 27, has been appointed Head Greenkeeper at The Fulwell Golf Club in Middlesex.

Sam, who had previously been appointed Course Manager at Oakland Park Golf Club at the tender age of 25, joined his new club at the end of February. He will be working closely with Greg Evans MG (no relation), who has the position Head of Golf Course Development at the club.

Sam joins a relatively young yet experienced greenkeeping team at Fulwell who are all looking to push the course to that next level. Sam's early career saw him work at Heythrop Park Resort as an Assistant Greenkeeper under Phil Helmn MG and Deputy at Oakland Park Golf Club under Graham Down.

Greg commented on his appointment, 'Sam went through a rigorous recruitment process which took several months to complete. We were very happy when he accepted the position and has made a great start to the role.'

Having lived in the Oxfordshire town of Chipping Norton all his life, he will now make the move to Twickenham with his wife and young daughter.

"I am extremely excited about joining Fulwell, the team have been



Sam Evans, left and Greg Evans at The Fulwell Golf Club

very welcoming so far and it is great that we all have the same goal to take the course forward in the future. I am looking forward to working with Greg and

Murray Cook our new Secretary, learning different turf management techniques to ensure we produce the best possible product.'

Aiming high is the key to continued success for CGS

Creative Gardening Solutions, based in the West Midlands, is the proud new owner of two new Etesia ride-on mowers and Directors Andrew Rossiter and Matthew Tromans couldn't be happier.

The family run business, which specialises in domestic and commercial grounds maintenance, has gone from strength to strength since father and son, Matthew and Chris Tromans, decided to create a grounds maintenance company with a difference.

The company now has a dedicated arboriculture team, a landscape team, a number of qualified horticulturists and a fully trained grounds maintenance team. The company continues to expand and win new contracts and Matthew commented on the key ingredients behind the company's rapid growth.

"All of our business has been achieved through word of mouth. It's been based on the work that we have done, and the fact that we want our sites to be the best that they can possibly be. In order to do that; we need to ensure that we have the best possible team and equipment in place.

"Every penny has been re-invested in staff training and machinery and because we have such high standards we insist on using only the best – that's why we came to Etesia."

Creative Gardening Solutions had



All aboard:
Directors Andrew
Rossiter and
Matthew Tromans

its first taste of Etesia a few years ago when they purchased an Etesia Hydro 80 MKHP ride-on mower. From day one, Andrew – Matthew's brother-in-law – knew that they were working with something special.

"We were starting to win more sites and contracts so we decided that we needed to speed things up a little bit. The Hydro 80 was perfect – it wasn't too big, it could fit through small gates, it was quick and it could collect just as well as any pedestrian mower – better in some cases. Quite simply, it was out performing everything else that we had which included machines from some very well-known brands."

So when the time came for Creative Gardening Solutions to further enhance its equipment, Matthew had a good idea of which company to turn to. Nonetheless, Matthew wasn't going to rush into a quick-fire decision – he needed to ensure that the new machine would live up to the high standards of the company.

"I'm more than happy to move everything to Etesia if they keep cutting like this. As we continue to expand we need to always ensure that we keep the quality up. We need the best machinery that does the job quickly and to the best possible standard," said Matthew.

Phil takes on new role with Barenbrug

Barenbrug, the UK grass seed expert, has appointed Phil Dick, pictured, as new Research and Technical Sales Manager for North of England & Ireland.

As well as business development and customer support in his regions, Phil will play a key part in Barenbrug's UK research at its Cropvale site in Worcestershire. This follows the promotion of Dr David Greenshields to Amenity Business Manager, who will be leading Barenbrug's European research efforts.

A keen golfer and ex-greenkeeper, Phil has joined Barenbrug from the STRI,

where he looked at the newest and most exciting technologies in the turfgrass industry.



Phil said: "My goal is to make sure the sports facilities in my region have the right information, so they can make good decisions and get the best products for their facility – always backed by solid research," said Phil.

"Barenbrug invests a huge amount in R&D. Their focus is on finding a solution to a problem, not just pushing out bags of seed. That what makes this role really interesting. So I'm looking forward to working on trial plots and wear trials at Cropvale, and taking customers along to show them how we select our grasses, to get the very best results."

Since using ICL, prestigious school has never looked back

The Head of Grounds at Solihull School in the West Midlands says he has taken the school's sports pitches and estates to another level since using a range of products from ICL.

The school offers a fantastic array of co-curricular activities, part of which is the sports department. The 50 acre site includes a sports hall, fitness balcony, swimming pool, floodlit artificial pitch and a modern sports pavilion; along with five rugby pitches, four cricket pitches, and four junior school football pitches.

Tasked with keeping the school's grounds in pristine condition and to keep the school's fine reputation intact is Head of Grounds Karl Brotherhood. It is no easy feat for Karl and his five members of staff, especially with over 1,000 sports fixtures each year – and that is on top of fulfilling all landscaping duties which include attending to the ornamental lawns and all of the plants and trees on campus.

"Using the correct products is essential here at Solihull School and that is why I choose ICL," says Karl.

"I first heard of ICL, or Everris as it was then, in my previous job at Edgbaston Cricket Ground where we used the SierrablenPlus range of fertilisers. They were brilliant and I haven't looked back since."

From his experiences of working with the product at Edgbaston, Karl decided that SierrablenPlus Stress Control 15-5-22+2Mg would be one of the first ICL products introduced into



Head of Grounds Karl Brotherhood with ICL's Emma Kilby

his turf maintenance programme at the school. Karl now uses it on the rugby pitches, the training areas and the junior football pitches and praises it for getting him through the majority of the season.

From the ICL granular fertiliser range, Karl also applies Greenmaster Pro-Lite Autumn 6-5-10+6Fe to his cricket squares. Karl uses this all year round as to optimise turf health throughout the year.

For his cricket outfield Karl applies a tank-mix consisting of plant growth regulator Primo Maxx and Sportsmaster WSF 35-0-14 water soluble fertiliser. Karl applies this combination every four to five weeks from April through to August.

"At first I didn't think all of the

ICL products would fit into my budget but when you break it down, you realise that it actually works out more cost-effective in the long run. The products don't give you peaks and troughs with the growth, you're getting good consistency and excellent presentation and you also get that all important sward density. When you look at all the benefits and how long they last it is actually very cost-effective because you are not having to apply them every six to eight weeks.

"It's not just the products we get great results from – Emma Kilby from the company is an invaluable person to talk to ensuring that we have the best possible nutritional programme in place."

Billy readies Troon for Open Championship

Billy McLachlan, Course Manager at Royal Troon Golf Club, and his 15-strong greenkeeping team will see the culmination of two years' preparatory work on the course and greens this July, when the Ayrshire club hosts the 145th Open Championship – the ninth time the event has been held at Royal Troon. The work has included specification changes to all the Old Course greens.

Continuing its close relationship with John Deere and dealer Nairn Brown at Busby, Glasgow, the club has bought five new 220SL walk-behind greens mowers and a new 2653B ride-on triplex

cylinder mower as the latest additions to its fleet of course maintenance equipment. The 220SL walk-behinds replaced a similar number of older 220C models, while the 2653B complements a 12-year old model that is still going strong. Royal Troon also runs John Deere compact tractors.

"We've been using the 220 walk-behinds for the past 12 years, going back to the B Series models, and the latest SLs are part of our rolling machinery replacement policy," said Billy.

■ See feature, pages 16-21



Mowers in action at Troon

Tea Break Teaser



145TH

1. The last six winners of the Royal Troon Opens have all been American. Name them.
2. Outside of Royal Troon, which other Scottish courses are, as of June 2016, on the Open rota?
3. In which year did Arthur Havers win the first Troon Open?
4. We've all heard of The Postage Stamp, but which hole is it at Royal Troon?
5. Who memorably holed in one at The Postage Stamp at the age of 71 during the 1973 Open?
6. In which county would you find Royal Troon?
7. Who was the outstanding South African player who won The Open at Troon in 1950?
8. Who was the American player who was defending the title at Royal Troon in 2004?
9. The father of which well known golfer was the Secretary at Royal Troon for many years?
10. Who was the English professional Ryder Cup player who was joint runner-up in the 1982 Open?
11. What was significant about the play-off to determine the winner of the 1989 Open?
12. Which Aussie player birdied the first six holes on the final day of the 1989 Open to force his way into the play-off?
13. Another great player lost the four hole play-off in the last Royal Troon Open. Who was he?
14. In which decade of the 20th century was Troon granted its "Royal" status?
15. This BBC commentator, equally at home with golf, rugby, athletics, tennis and The Boat Race, is from Troon. Who is he?

■ Answers on Page 35.

NOT SO GOOD VIBRATIONS



Why Vibration White Finger needn't be an inevitable consequence of doing the job you love...

Many of us carry our own "war wounds", the wear and tear which means we don't quite move in that lithe free flowing manner we did in our 20s, or that we don't have that fresh-faced blemish free appearance we were known for in our teens.

It may be that Sunday league football has taken its toll on your knees or hips and that you now struggle to get out of bed or into a car; or that twice broken nose from playing rugby has defined your appearance for the last 20 years; or that foolish attempt at high cuisine has left you with a scar on your left index finger.

The point is that through time we begin to gather faults and imperfections – it is our lot that we must learn to live with them.

However, there is something to which sports turf professionals are succumbing which doesn't have to be one of those unfortunate consequences of an activity, whether it be sporting, personal or, in this case, professional.

Many sports turf professionals view hand arm vibration syndrome (HAVS), otherwise known as Vibration White Finger, as an unfortunately consequence of doing the job they love. That is wrong.

And if you group Vibration White

Finger with the impact the noise of turf machinery can have on the hearing of the operator and the toxins which are produced by fuel driven machines you can appreciate that the working life of a sports turf professional.

Just as a blind eye was shown to coal miners who suffered from breathing difficulties as it was felt that it was all part of the job, groundsmen and golf greenkeepers who have their lives blighted by their repeated use of vibrating sports turf machinery should not be put into that position.

The ECB do promote Health and

Safety – Potential Dangers on its website and lists Noise, Vibration and Hazardous Substances ask key areas to observe but many sports turf professionals still consider such matters as part of the rough and tumble of doing the job. Hard hats and ear defenders have been around for decades but it was only when Health and Safety Legislation kicked in, coupled with stricter management enforcement, that many operators actually began to wear them.

Vibration White Finger – or HAVS – comes from the use of hand held power tools and is the cause of significant ill health though painful and disabling disorders of the blood vessels, nerves and joints.

The Government's Health and Safety Executive website – www.hse.gov.uk – includes the regular use of chainsaws, brush cutters, hedge trimmers and powered mowers as putting the operator at risk and I'm sure there are many other pieces of kit, used in the sports turf industry, which you could put into the same category.

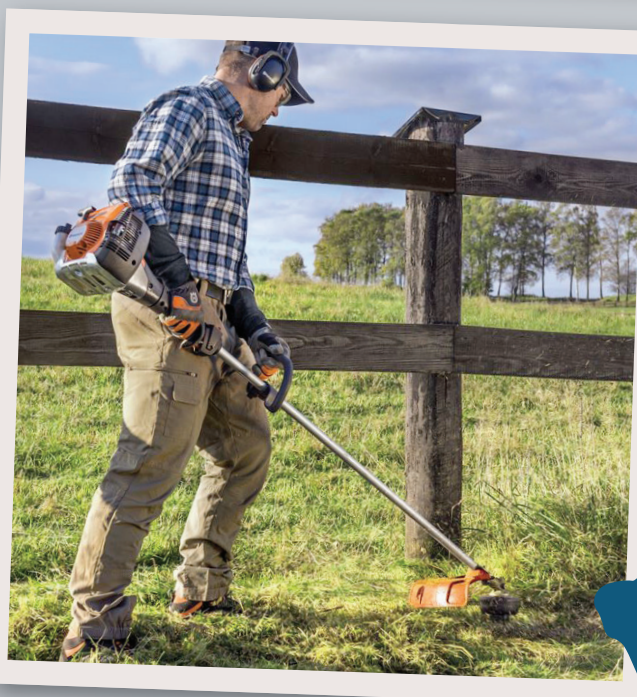
The advice is that you are particularly at risk if you use "some rotary and other action tools for more than about one hour per day". Correct me if I'm wrong but I'm pretty sure there are many, many groundsmen and golf greenkeepers who could quite easily add seven or eight hours to the time they are daily using such equipment.

The HSE offers advice on what to look for in the early signs of Vibration White Finger.

- Tingling and numbness in the fingers (which can cause sleep disturbance)
- Not being able to feel things with your fingers
- Loss of strength in your hands (you may be less able to pick up and hold heavy objects)
- In the cold and wet, the tips of your fingers going white then red and being painful on recovery (Vibration White Finger).

If working practices continue without amendment these symptoms will probably get worse.

- The numbness in your hands could become permanent and you won't be able to feel things at all
- You will have difficulty picking up small objects such as screws or nails
- The Vibration White Finger could happen more frequently and affect more of your fingers. ▶



HUGH KING & CO

Sands, Mortars
& Bagged Aggregates

www.hughking.co.uk

The complete solution...

Japanese
Knotweed
specialists

Complete Weed Control are proud of the fact that for the last 40 years we have offered a specialist contract service for the eradication of all problem weeds.

Our clients include government departments, local authorities, public utilities, golf courses, amenity leisure areas as well as commercial sites.

For a complete solution, call the longest established amenity weed control company in the UK and Ireland.

We do...

- Total weed control
- Selective weed control
- Aquatic weed control
- Disease control
- Grass growth control
- Insect control
- Fertiliser application
- Moss & algae control
- Worm control
- Forestry
- Urban tree protection

Local help
from a national
company

**complete
weed control**



For a complete solution, contact

0800 783 2884

www.completeweedcontrol.com

Because, after all,

TURF MATTERS

To advertise, contact Scott MacCallum

Email: scott@turfatters.co.uk



“It is the employer’s responsibility to protect you against HAVS, but employees should help by asking your employer if your job could be done in a different way without using vibrating tools and machines”

► The HSE website does offer advice on how to protect yourself if you feel that you are at risk – it is the employer’s responsibility to protect you against HAVS (and the associated carpal tunnel syndrome) but employees should help by asking your employer if your job could be done in a different way without using vibrating tools and machines. If this cannot happen:

- Ask to use suitable low-vibration tools
 - Always use the correct tool for each job (to do the job more quickly and expose you to less hand-arm vibration)
 - Check tools before using them to make sure they have been properly maintained and repaired to avoid increased vibration caused by faults or general wear
 - Make sure cutting tools are kept sharp so that they remain efficient
 - Reduce the amount of time you use a tool in one go, by doing other jobs in between
 - Avoid gripping or forcing a tool or work piece more than you have to
 - Store tools so that they do not have very cold handles when next used
- Encourage good blood circulation by:
- Keeping warm and dry (when necessary wear clothes, a hat, waterproofs and use heating pads if available)

- Giving up or cutting down on smoking because smoking reduces blood flow
- Massaging and exercising your fingers during work breaks.

Now some of the advice is out of the teaching your mother to suck eggs but it may be that there is something within it that you could – or should – be introducing to your working practices.

The advice does continue and suggests that you:

- Learn to recognise the early signs and symptoms of HAVS
- Report any symptoms promptly to your employer or the person who carries out your health checks
- Use any control measures that your employer has put in place to reduce the risk of HAVS
- Ask your trade union safety representative or employee representative for advice.

For further advice the HSE has a free leaflet Hand-arm vibration – Advice for Employees (INDG296) or download HSE’s free leaflet Control the risks from hand-arm vibration – Advice for employers on the Control of Vibration at Work Regulations 2005 (INDG175 –rev2)

To be a sports turf professional you have to love what you do. Enormous

amount of time and effort goes into to getting everything spot on. We all know that you often go above and beyond to perform the task and this can on occasion be exploited and as a result the health and safety of staff gets set to one side.

It is often purely through the good will of the groundsman or golf greenkeeper that they continue to do the job. Perhaps there is a fear of speaking out and of expressing health and safety concerns to push management into doing something. Or perhaps there is simply not the level of awareness needed on both the part of the groundsman and the management to make educated decisions based on health.

What else can be done?

- Increased training with regards to the risks that groundsmen face
- Increased awareness from management over what risks their groundsmen take to do the job. More value for the work undertaken.
- More staff – fewer hours on machinery. This is obviously more costly and puts more people at risk.
- Look at other options in machinery – battery power eliminates the issues of vibration, noise and emissions. Technology has improved so that quality doesn’t have to be compromised.

An image displaying the effects of HAVS on the hands

Following a spate of adverse weather conditions, Royal Troon is gearing up to host the world's greatest golfing tournament...

Open for business



Wouldn't we all love to have a superpower? What would be yours? Time travel? Invisibility? Superhuman strength? Ability to fly?

For me, it would be the ability to get inside the head of all referees in charge of Scotland matches – in all sports – and ensure even handed fairness.

Now I have no trouble in working out what superpower golf greenkeepers would wish for. One hundred percent it would be the ability to control the weather.

I also have no doubt that the first volunteer to be the controller of the weather gods would be Billy McLachlan, Course Manager at Royal Troon which hosts The Open in mid July, because he has seen weather on his little patch of west of Scotland coast which he has never experienced during his 35 years at Troon.

THE RAIN STARTED IN NOVEMBER AND JUST KEPT FALLING. WE HAD FLOODING ON ABOUT A DOZEN AREAS AROUND THE COURSE, AS A RESULT OF THE WATER TABLE BEING SO HIGH AND IT JUST WOULDN'T GO AWAY...

BILLY McLACHLAN

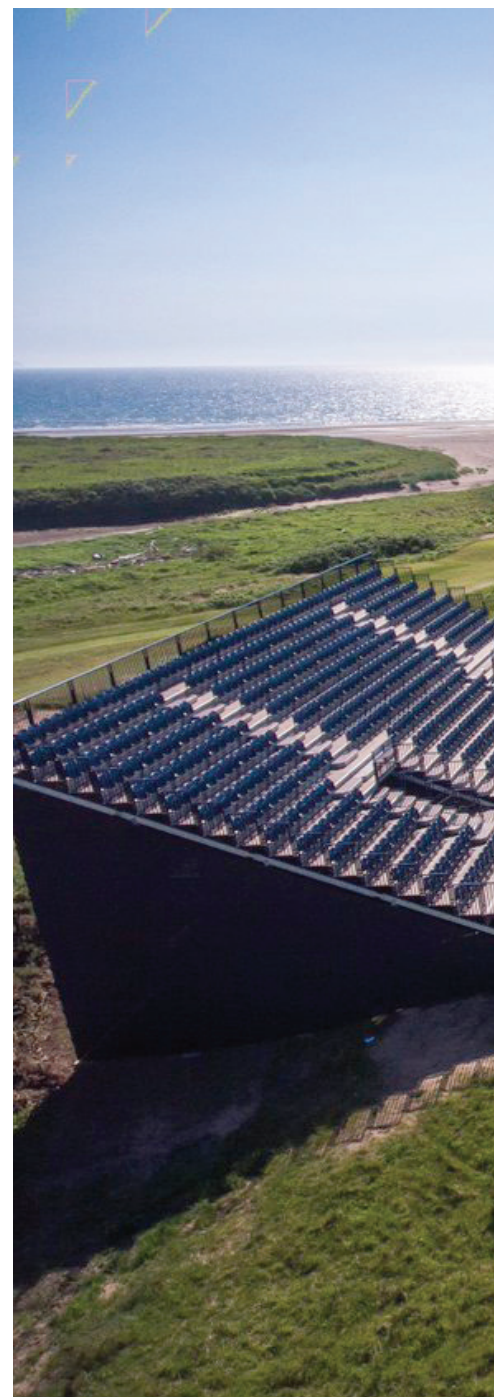


► Let Billy explain just why those weather controlling powers would have been such a valuable part of his tool kit over the last nine months or so.

"The rain started in November and just kept falling. We had flooding on about a dozen areas around the course, as a result of the water table being so high and it just wouldn't go away," explained Billy, for whom the 2016 Open will be the third time he has been in charge of preparing a course for the greatest golf championship in the world.

But while King Canute had suffered from similar well documented issues in the past, the Troon team knew that they had to make every effort with preparation time for July's Open being reduced all the time.

"We had to be seen to be doing something so that we couldn't be accused of just sitting back, but every course in the area was



suffering just the same – it was nature at work – and we just hoped there would be a turn around in the weather.

When it got to February with no improvement Billy and his team decided that drastic times required drastic measures and they started pumping.

"I'm not exaggerating. We must have pumped millions of gallons off the course, sending it onto the beach about 200 yards out, but we weren't making any headway. The guys really were getting frustrated. They would pump out an area and make a bit of a difference and then go back the next day and it was almost as bad as before," said Billy.



ACTION PLAN:
Preparations for the world's greatest golfing tournament are well underway at Royal Troon – including the erection of the iconic 'Open' scoreboard



"I'd never seen anything like it in all my time here at Troon. My other two Opens enjoyed good weather in the run up and it was a straight forward case of not doing anything silly and we enjoyed excellent Opens. This was different."

One thing he has learned over the last 20 years was above all to keep up a calm exterior at all times.

"I was telling people not to worry, we'll be fine, but deep down I was concerned. It was very unusual, puddles were sitting for weeks, if not months, and in all honesty we just didn't know what was going to happen. I remember a weekend at the beginning of April at a time when I

thought we were finally getting on top of it, when we had some really heavy rain on a Friday night.

"I went out to look at the 11th fairway, where we had lost quite a bit of grass. We'd had to sit on our hands because it wasn't ready to re-seed, but the boys had finally got in and done a really good job.

"I remember creeping round the corner, scared to look in case the rain had caused us more problems, thinking please don't be puddled. But there it was – a huge puddle. I won't tell you what I muttered under my breath, but I was thinking, 'Here it is back to haunt us again,'" revealed Billy.



SETTING THE SCENE: A challenging Par 3 and the second shortest hole on the course at 178 yards – Hole 14: Alton, Old Course.

► Fortunately a dry spell followed and the team were able to get their preparations back on schedule and the contractors, who build what can now rightly be described as a massive temporary city, were able to get on site.

“It wasn’t ideal as it was still soft and we had to put tracking down to enable them to build up the stands around the 18th.”

In the 12 years since Billy and his team last prepared for an Open much has changed. The tents – temporary buildings would be a better name for them – are much bigger. Everything is much bigger while the R&A has also changed. Even at the top, and Martin Slumbers, who took over the reins from Peter Dawson as Chief Executive, will be in charge for his first Championship.

“He has been here on a number of occasions and has gone on the official course walks to see how preparations are progressing.”

Billy has also seen a change in the management structure

I KNOW THERE ARE MANY GREENKEEPERS OUT THERE WHO WOULD LOVE TO DO THE OPEN BUT IT DOES TAKE OVER YOUR LIFE.

within the R&A when it comes to running The Open.

“Since the 2004 Open I have found that the R&A now have individuals dealing with individual areas of responsibility. Last time I dealt with one person on a number of different areas.”

Since his first Open in charge – Justin Leonard’s win in 1997 – Billy has also evolved as a Course Manager.

“When we started taking scientific readings around the course to identify bounce levels, hydraulic conductivity etc, I’m not sure if I liked the idea. I

felt that I was putting my neck on the line. Now I test for everything, even if it is just to reassure myself that my instincts are correct. It’s a little like when mobile phones came out. I didn’t like them as they often meant dropping what I was doing at the time whenever the phone goes off. Now, if I leave my mobile in the house I panic.”

Other changes to course maintenance have been helped by the improvement in machinery over the last 20 years which has enabled more procedures to be carried out quicker and more efficiently.



“We do a lot more sanding now than before. Richard Windows, of the STRI, is a massive help to me and he suggested that we put much more sand on the fairways and that has raised the quality to the extent that they are now very good links fairways. It has made a real difference.”

Another change that he has introduced has seen the winter months utilised for top dressing.

“I used to top dress in the summer or the spring but now I do 90% of our top dressing from October to March – greens, fairways, tees, everything.”

Speaking six weeks before the first tee shot is hit in the Open, Billy was deep in preparation mode and keen to ensure every base was covered.

“I’m living and breathing it every minute of every day. I wake up thinking of things I need to get done and those which I should have done the previous day. There is apprehension. I know there are many greenkeepers out there who would love to do The Open



but it does take over your life. So I will be relieved when we get to the end of the week – although the Monday after it finishes is as hectic as the rest of the days.”

He does see himself very much part of a team and knows that every cog in the wheel is as important as the next.

“Richard (Windows) has been absolutely brilliant. He is a huge help, while the guys – there’s a team of 17 including himself and seasonal workers for the 45 holes at Royal Troon – have done

a fantastic job. They really have been putting every last bit of effort into their work for months now.”

So it is fair to suggest that Billy would make sure he was at the front of the queue when those superhero powers were being allocated and that, given his first choice, life might be that much less stressful for the next Royal Troon Open Championship.

Ordering up an extended spell of sunny warm weather with occasional overnight rain from his mobile phone would be just the job.

TOP: How Royal Troon must have looked to the raindrops which fell for months on the course

ABOVE: The Royal Troon greenkeeping team ready for action

SAND LINKS RO TRIUMPHANT C



Sand supplier Hugh King & Co contribute to making the Open Championship one to remember



Graeme King,
Managing
Director of Hugh
King & Co

Royal Troon Golf Club has completed the most comprehensive preparations it has ever undertaken to ensure the Open Championship is played over firm and running links turf. Considered one of the world's finest links courses, Royal Troon's unprecedented preparations for the 145th Open have been three years in the making.

Weather permitting, this year's Championship should have all the hallmarks of a classic links layout with firm surfaces providing ideal playing conditions for four exciting tournament days. These characteristics are intrinsic to the history and traditions of the game and, of course, The Open Championship.

"We want a traditional links feel," said Billy McLachlan, Royal Troon's experienced Course Manager.

"Firm, fast and bouncy. That's what we're trying to target for at The Open, and at any time. We're doing

everything we can to get a linksy feel and if the weather goes with us, we will hopefully achieve it."

The Ayrshire course has hosted The Open Championship eight times with the last Royal Troon Open being decided in dramatic style by Todd Hamilton in a four-hole play-off in 2004. This year's tournament will be an even greater feast for links lovers thanks to the efforts made by Billy and his team of greenkeepers as well as the support of the STRI and sand supplier, Hugh King & Co.

This collective team, along with the club itself, embarked on a targeted project to deliver a firmer, more linksy feel following the staging of The Amateur Championship in 2012. Played in less than ideal conditions, the event highlighted the need to improve the firmness of the golf course in the run-up to The Open Championship.

"We held The Amateur in 2012 and it wasn't very nice weather. It was wet

and the ground was a bit soft," Billy remembered.

"There was a deliberate decision made then to be more linksy. At that time, we were the softest of the Open Championship courses."

Until then the club had used a sand-soil mix. A judgement was made to retain the sand but omit the soil.

"In 2013 we went to using straight sand, which was Hugh King's Washed Dune sand. It is used by a lot of golf courses, so we were quite fortunate to have it just 10 miles up the road."

The club opted to topdress its greens, tees, fairways and surrounds with Hugh King's Washed Dune sand and, under the guidance of Richard Windows, the STRI's turfgrass agronomist, dilute organic matter and improve firmness.

"This was initially done through hollow-coring and Graden sand injection scarification using Hugh King kiln-dried sand," explained Richard.

ROYAL TROON TO OPEN RETURN

“Thereafter, there was a process of solid-tining and routine sand top-dressing with the majority of sand being applied during the September to May period to minimise disruption to golf.”

The ambitious three-year project was completed this winter and has delivered sensational results. “It has been incredibly successful,” said Richard.

“Organic matter has been reduced by an average of 58% on the greens and firmness has been improved by 25% and is now in the target range of The Open Championship. We tried to get the levels of firmness in target regardless of the weather conditions. The more sand you put on, the more chance you have of achieving that objective.”

For the man closest to the project, the change has been most noticeable on the greens. “Before there was more organic material in the greens, so the turf held more moisture,” explained Billy.

“Hopefully we’re heading down the right path. All the tests are giving us good results – organic matter down, firmness readings up. I can get more speed in the greens more easily and they don’t hold the water as they did before – all this kind of stuff. We’re on line to where we want to be which is harder, faster and firmer.”

The ambitious project to firm up Royal Troon centred around taking organic matters out of the soil. To do this, the club needed sand.

“It has been a privilege to work with Billy on this project and to see the huge strides made by he and his team,” said Graeme King, Managing Director of the family run business, Hugh King & Co.

“Sand is a critical part of a golf course and we are extremely proud our sand is helping one of the finest links golf courses in the world deliver what should be a memorable Open Championship.”

Hugh King & Co supplies sands to over 120 golf courses including all Open Championship venues in Scotland.



Keeping Rugby School on the ball



Rugby School is one of the oldest independent schools in Britain, offering co-educational day and boarding schooling in Warwickshire. The school grounds and vast sporting facilities total 250 acres and host students and professional teams from the local area. Always looking to improve the quality of the machinery they use to deliver top quality sports surfaces, Head Groundsman James Mead took delivery of an INFiNiSystem and a selection of TMSsystem cassettes from ATT at the start of this season.

“Cricket in particular is an

important sport for us as we host First Class County Cricket fixtures for Warwickshire. When these matches take place, there can be as many as 4,000 people in the ground so providing top quality surfaces is of prime importance” explained James. On top of the full spectrum of sports facilities at the school site James and his team of nine Groundstaff, also maintain a further five squares at five other cricket grounds during the summer.

“Our kit has to work very hard and after reading about, and having a demonstration of, the ATT INFiNiSystem, we felt we we’re

missing out by not having one. All my team, especially my number 2 in charge, fell in love with it during the demo and so it became a no-brainer that it was the right kit to go for. Since taking delivery at the end of May it has become the go-to piece of machinery and the only kit we use on the 1st team square. We’re all extremely pleased with how it’s working and I’m sure it won’t be the last piece of ATT we will own.”

James purchased the 22” INFiNiSystem, and the SMARTCut, SMARTUltraGroomer and SMARTPowerBrush cassettes from ATT’s Turf Management System.

Setting up a network of Trilo dealers



Jon Proffitt

Jon Proffitt, UK Factory Support Manager of Vanmac, has been busy constructing a network of established dealers for their Trilo range of Blowers, Vacuum Collectors and Verticutters.

After announcing they were to be selling direct in the UK, Jon has been signing up sales outlets to cover the whole of England, Scotland and Wales.

Vanmac Commercial Director, Peter van Mispelaar, said at the time that the move would allow them to better tailor their sales and service of Trilo machines to the UK market. To that end well-known names in the industry, from the North to the South, have been signing up to distribute the well-established product portfolio.

Companies like Sherriff Groundcare and Stewart Plant Sales in Scotland; Lloyd Ltd, Balmers Groundcare and Turner Groundcare in the North; Farol Limited and Ernest Doe covering the Central and Eastern regions and Winchester Garden Machinery and GA Groundcare the southern counties – with more in the pipeline.

Multifunctionality pays dividends

David Paisley, Proprietor of Pennine Environmental Solutions, attributes the growth of his business to the acquisition of his 59hp, 4 cylinder, diesel powered, hydrostatic drive Reform Metrac H5X.

"We really had no specific work for the H5X when we took the decision to buy it but the range of service provision and capabilities it has given us has resulted in sustained business growth and means we now have grounds maintenance contracts nationwide, including Wrexham, Carlisle, Hastings and along the M25," said David.

"Our work level has increased to the point where we took the decision recently to add a second Reform, a new 70hp turbo charged hydrostatic drive Metrac H7SX model. The Reforms are the mainstay of our fleet for work such as maintenance with mulching devices, parks maintenance with a sickle mower and grass vacuum, autumn maintenance with a leaf vacuum, mowing safely on river



and highway bank slopes and forestry work with a winch and trailer"

Simon Richard, UK Agent for the Reform bank tractor and Muthing flail ranges, said, "The Metrac with Muthing flail, is a critically safe machine; manoeuvrable, versatile and well-suited to working on slopes and for the widest range of grounds

maintenance tasks.

"We are seeing an increase in demand based on their multi-functionality and lifetime cost benefits. The balanced weight distribution and crab steer function are the ideal combination to enable the operator to work safely at angles of up to 45 degrees".

The best just got better!

- **Cut and Collect**
- **Cut and Drop**
- **Mulch**
- **Stripe**

Easy, effortless striping – in all weathers.

ETESIA

Seeing is believing

Greenway House • Sugarswell Business Park • Sherington • Oxon OX15 6HW
Tel: 01295 680120 • email: sales@etesia.co.uk

www.etesia.co.uk

f Etesia UK @EtesiaUK You Tube EtesiaUK

RK41
Fits our 41cm machines including:
NACS NACTS NBCS NBCT

RK46
Fits our 46cm machines including:
PKCTM PHCS PHCT PACS PACTS



Before and after at Tadcaster Albion FC

Pitch is rejuvenated after horrors of Boxing Day floods

Aitkens have been hailed as an integral part of the pitch rejuvenation at Tadcaster Albion Football Club, after the surface lay under water for ten weeks, with initial flooding in December seeing water rising over the height of the crossbar.

Tadcaster A.F.C were unable to play at the i2i Stadium until mid-February as Head Groundsman, David Wakefield, tried to salvage what was an impressive pitch from weeks of flooding, starting from Boxing Day 2015.

With the help of Aitkens' Paul Emmanuel and their range of products there was only a 73-day wait for football to return, and David explains just how vital a role the company played in helping the part-time groundsman.

"Paul was second to none for advice and support," he said.

"All the staff at Aitkens from Richard Aitken to the delivery drivers and the

lads in the warehouse were great with us, and the level of customer service we received was fantastic, they really were truly helpful."

"We were at a stage where the grass had literally died, so we had to compose a plan that would help us get the surface back, but we were conscious of not going for any quick fixes. Paul's initial thoughts were that we needed to get some grass growing, so went for the Award Nutri-Pro 16-2-10 fertiliser, and even though it's not the ideal time of year to apply it, the results were great."

David was already a customer of Aitkens, and he believes that the time spent in developing organic products helped to develop a very strong soil and root zone – through Rocastem, Award Surf To Turf and Quadrop – and because of this, recovering the pitch was made that bit easier.

The damage that David was faced

with at the end of 2015 would be the stuff of nightmares for most groundsmen, all of whom have been facing difficulties with the weather in one way or another in recent times.

"The flooding happened on Boxing Day and the water was over the crossbar," David explained.

"The pitch sat under around three to four feet of water for two or three days until it started to recede, then we were able to get in and start pumping it off."

"We had a lot of rubbish to clear off the site like boards, fencing and sheds that had floated in, but it was so wet it was like walking through a bog, you'd be leaving foot prints as you walked."

"It was six weeks until we were able to get onto the pitch, but it was under water in some areas for nine weeks because of a drain around the back of the stand, so it wasn't until February that we had a completely dry surface."

Why it's BBB for the RAC

The Royal Automobile Club in Epsom is nearing completion of its restoration of numerous bunkers utilising the Better Billy Bunker method. BBB licensed installer and representative for UK and Europe Campbell Golf Associates was selected to install the revolutionary bunker drainage method.

After conducting several detailed trials, Royal Automobile Club Golf Course

Manager Lee Strutt MG, CGCS, MS chose the Better Billy Bunker Method based on performance, cost effectiveness, and ease of installation. Faced with a narrow time frame for completion of the project, Campbell Golf Associates installed more than 2,000 square metres of the BBB drainage layer in less than four days.

Andy Campbell, of Campbell Golf Associates, commented "We were pleased

at the opportunity to work at such a wonderful facility.

"Lee and his staff were extremely helpful and accommodating as we completed the installation of BBB in 33 bunkers in a timely fashion. This proven method has been utilised at some of the world's top facilities and we are proud to add the Royal Automobile Club to that list."

Two more amenity specialists for Sherriff Amenity

Sherriff Amenity has announced the appointment of Joseph Dormer and Rob Bradshaw, who both join the company's team of Amenity Specialists.

Joseph joins Sherriff Amenity with excellent knowledge of the sports turf industry having previously been a greenkeeper for ten years – most notably as the deputy head greenkeeper at the illustrious West Sussex Golf Club. It was while working in this position that he first became familiar with his new employers.

"We used to use a lot of Sherriff Amenity products at West Sussex Golf Club and I always liked the technical representatives that used to come in to see us. You could tell that they were really well trained and they always spoke very highly of the company."

So when the opportunity to join the

company arose, Joseph felt that he would be the right man for the job.

Joining Joseph is Rob Bradshaw, who is already a familiar face in the industry. The two time IOG Award winner and pitch advisor for Huntingdonshire FA, has been involved with many educational events within the industry and is looking forward to passing his knowledge onto others.

"I just want to get the satisfaction of helping our customers with their work and seeing the end results. There is nothing more satisfying than going into a venue and knowing that I've given that person everything I know, given him the correct and affordable products and seeing that they have all worked."

Rob was in fact a long-term user of Sherriff Amenity products in his previous role as head groundsman at One Leisure



sports complex based in St Ives.

Rob will be embarking on a more specialised role with Sherriff Amenity in which he will mainly be focusing on football, cricket and bowls clubs in the area of Cambridgeshire.



Joseph Dormer, left and Rob Bradshaw

Get the right grass seed from the start

Leigh Sports Village comprises of a 12,500 capacity stadium; a running track with 1,000 seater stadium and 3 training pitches.

"Offering a high-use, multi-sport facility is all about the management and the best place to start is with the right grass seed," explained Head Groundsman Keith Porter, The village is home to the Leigh Centurions rugby team and the under 21 squads of Manchester United FC and Blackburn FC. It is also used as a temporary training ground and match base for touring teams in Europe.

Keith has been a stalwart of Johnson's seed at the stadium for the last nine years, and before that during his time as a contractor. J Premier Pitch, because of the top rated cultivars in the mixture, has been sown on the stadium pitch and training grounds.

"We've tried other seeds in the past but those from Johnsons always come out on top"

explained Keith.

"It wears well, offers better coverage over winter, handles stress well and has good disease resistance. It also has great recovery rates, recovering a lot quicker after use which is vital when sometimes we only have 24 hours after a rugby match to get the pitch ready for a football game."



Keith Porter

Zero Disruption Maximum Aeration

Aerate with the Air 2G2 anytime of the year

Injecting compressed air deep into the ground causing a fracturing effect of the compacted root-zone, all with no surface disruption.

Perfecting Play™



For more information
call: +44 (0)1260 224568
email: info@campey-turfcare.com
visit www.campey-turfcare.com
or www.air2g2.co.uk



Effective aeration is an essential component in developing fine turf surfaces. Turf Matters looks at what some companies are doing to help build further on high standards...



A perfect fir

Winning over so many UK greenkeepers is the Toro ProCore 648 pedestrian aerator.

Whether hollow- or solid-tining, the ProCore 648 leaves a clean, even finish that allows operation on fine turf with the absolute minimum of disturbance and gets surfaces back into play quickly.

Fitted with a head drive system that uses precision balancing weights, similar to those found on a six-cylinder

engine, on each coring head, this configuration eliminates hopping, rocking and uncomfortable vibration.

From the innovative wheels within the coring path, to the large 122cm aeration swath, the Toro ProCore 648 is one of the most productive and efficient pedestrian aerators on the market.

Did you know?

- Toro's ProCore 648 can aerate an 18-

hole golf course in about seven hours

- With a maximum four-inch coring depth, you can go even deeper with the ProCore 648
- Even though it's small the ProCore 648 has an impressive reach with a coring width of 48 inches
- Pick your number – 18 to 60 tines can be fitted to the ProCore 648 and there's a choice of five different tine holders



inish

- Jump-start your productivity – the patent-pending taper-lock design of the Titan QuickChange tine head makes changing tines a snap. In fact, many users have reduced set-up time by up to 75 percent
- Maintain tine depth on the fly – the ProCore's TrueCore ground following system matches ground undulation for consistent and even coring.

Terrain Aeration deep penetration aeration for trees

We tend to take trees for granted, in our parks, estates and gardens, as a natural part of the landscape. All too often they are subjected to stress as a result of a number of factors such as nutrient shortages in the soil, surface compaction due to foot traffic and waterlogging where water drains off hard surface pathways. Armed with a number of solutions, Terrain Aeration have been treating trees in all types of situation for over 25 years, from back gardens to large estates right through to Royal Parks.

The Terrain Aeration Terralift machines comprise a probe which reaches one metre depth, deeper than the roots of trees (other than the major tap roots which grow straight down). Breaking up the soil around the roots, and beyond, means that excess water will drain away from the roots to help stop anaerobic conditions and rotting of the root system. The probe is then used to inject dried seaweed which helps keep the fissures open and backfilling the probe holes with aggregate provides a semi permanent aeration/ventilation shaft. Terrain Aeration aerate around the roots using two-metre spacings - on most occasions one-metre inside and one-metre outside the canopy drip line, as this is where the growing roots lie. Decompacting around the roots and injecting air into the soil increases the percentage of uptake of oxygen into the root system.

In one particular situation it was found there was a magnesium deficiency coupled with low overall soil fertility around trees in a park. This was determined using new technology to measure light transmission through the leaves on the trees to gain a

reading of chlorophyll levels. The likely cause of the problem was that leaf litter is always removed and had been for a century, taking with it the natural nutrients from decaying leaves. There was also severe compaction of the surface around the tree. A tree feed mix containing slow release general nutrients and magnesium was injected, using the Terralift's ability to inject granular material via its seaweed carrier, forcing it upwards into the root zone of the trees. This also avoids losing the nutrients to the grass which would occur with surface treatment.

There are some products in the market place which advertise to be of help for trees with Phytophthora.

There is a product which is applied around the tree roots via a watering can. If the tree roots have been aerated by the Terralift machine, the product has a far better chance of reaching affected roots due to the soil being decompacted. There are machines that will go shallower, but this does not have such an effective treatment as you would still need to get excess water away from laying stagnant around the roots. It is also recommended that root samples from good and affected trees, as well as tip samples be sent for full analysis from the Forestry Commission or any other Arboricultural advisor. The samples should be labelled as well as being placed in separate plastic bags. Photos of the location of the trees would also help, just in case there is a huge wall on three sides of the tree or something which could affect its well being.

It's best to give a complete "story" surrounding the tree.



Double quick results for Weidenman Terra Spike at Stanmore Golf Club, Middlesex



“The GXi8 HD can go to 250 mm and gives the flexibility and neat finish he requires. Its speed took him by surprise, adding to its attraction.”

Delivery of a new Wiedenmann Terra Spike aerator prompted two sets of excellent instant feedback at Stanmore Golf Club, Middlesex.

Firstly, Course Manager, Barry Neville, and his staff of five greenkeepers reported the GXi8 HD deep aerator had easily tined all 18 greens down to 150 mm with fabulous effect.

“After our installation and training session we just kept going,” he said. “The greens hadn’t been spiked for a few weeks so the team got everything done on day one with 8 mm tines in a 50 mm square hole pattern. The results were so much better than anything that had gone before and faster. We got the required depth, didn’t need to roll them and just cut them the next morning. Within another day the holes were hardly noticeable.”

The second set of plaudits came from Stanmore club members themselves.

“Golfers don’t tend to like any machinery on the greens but we had lots of positive comments, all saying how pleasantly surprised they were by the lack of disturbance to the surface,” continued Barry.

Stanmore Golf Club is an exceptionally varied course which can trace its roots back nearly 125 years and is renowned for its beautiful trees and spectacular vistas. Barry, who has been in charge since 1996 says it’s the first Terra Spike they’ve owned and while it was purchased primarily for greens, tees and approaches it will also be able to tackle fairways.

“I looked at several machines then Mark House, from Doe’s Benington, suggested the Wiedenmann which

stood out by far. We’ll have it tining year-round, every three to four weeks. During summer maintenance week in August we’ll hollow core the greens to 150 mm and follow up with 60 tonnes of a Banks’ medium sand. We’ll get to use our new swath board attachments so I’m really looking forward to trying them out,” continued Barry Neville.

Mark House, Groundcare Area Sales Manager for Ernest Doe Benington said:

“Having noticed a few areas which were holding water around 100 mm, Barry was always clear he was looking for something that tined a little bit deeper than what he had already. The GXi8 HD can go to 250 mm and gives the flexibility and neat finish he requires. Its speed took him by surprise adding to its attraction.”

Charterhouse Verti-Drain and Verti-Seed get directly to the heart of the matter

To help with the latest project of returning Fairways, Greens and Tees back to natural grass species, Enville Golf Club Course Manager Jonathan Wood enlisted the help of the Charterhouse Verti-Drain and Verti-Seed machines. The club started out as a 9 hole course with conversion to two 18 hole courses taking place in 1983. More recently extensive practice facilities were added to make them some of the finest in the Midlands.

Jonathan has a support team of 10 and has been at Enville for 10 years. He has always used Verti-Drains during that time. In October 2015 he took delivery of the large Verti-Drain 7521 - a like-for-like swap.

"They're quality pieces of kit so

when our previous model came to the end of its lifespan it was a no-brainer to replace it with the same machine. We use it to make two passes on all fairways throughout the winter to relieve compaction and create a better growing environment. We then use a smaller Verti-Drain 7316 on the greens once a year in October/November and on the tees during spring and autumn."

The course is set on a heathland site which means the fairways are very traditional in species. Over the last nine years, thanks to the work of Jonathan and his team, they are now dominated by finer grasses.

"It's noticeable that the aeration work with the Verti-Drain, and over seeding

with the Verti-Seed, has played a massive role in getting the fairways back to natural grasses to provide a much better playing surface. Similar work has also been carried out on the greens to change the dominant species over to bent and fescue. The Verti-Seed was used to do three passes on all 36 greens in the late summer/autumn period – again achieving great results."

For Jonathan, the two bits of kit have been invaluable.

"They work great in conjunction with one another and the results you can achieve are just great. As a long standing user of Charterhouse kit you just know what you're going to get – a superior build quality to last a good number of years. To me that's excellent investment value."



Campey appoints CLS as its latest dealer

Peter Stanley of CLS Selfdrive with Air2G2

Campey Turf Care Systems has welcomed another dealer to the group by appointing CLS Selfdrive, a division of Cleveland Land Services as

a dedicated dealership.

CLS, who is based in Cleveland, will be covering north, east and west Yorkshire, providing the entire range of Campey equipment, including the Imants, Dakota, and Raycam range of products all the way through to the popular Air-2G2.

Campey's Managing Director, Richard Campey, is delighted to have CLS joining them as a dealer, and is certain their expertise and acute knowledge of the Yorkshire area will be a massive benefit.

"We now have a company who is specifically focused on selling Campey products in the Yorkshire area as a priority, and that's important for us," he began.

"We have worked with CLS for

many years providing equipment for their contracting and hire businesses. As a dedicated dealer they will spend the time required demonstrating our range of machinery, and we think it will work very well for both parties."

John Miller, CLS Managing Director, also recognises that benefit of joining Campey as a dealer, having been a customer for years he knows the high quality machines and service they provide, and he is looking forward to offering this his local customer base as a dealer.

"We understand the importance of the reliable, specialist and innovative machinery Campey's can provide and look forward to supplying such quality along with great customer service to our local area."



#SoMuchChoice

Compact or Contractor - it's your choice!

As low as 13hp up to 65hp



Verti-Drain®

1M working width to 2.6M

Charterhouse
TURF MACHINERY

www.charterhouse-tm.co.uk | 01428 661222



Because, after all,

TURF MATTERS

Contact Scott MacCallum

Email: scott@turfatters.co.uk

BUYERS' GUIDE

GRASS SEED

BARENBRUG

CHOOSE THE BEST GRASS SEED FOR YOUR PITCH.

www.barenbrug.co.uk

YouTube Twitter Facebook LinkedIn

AGRONOMY SERVICES

GREG EVANS 
golf course solutions

- Agronomy Audits
- Advisory Services
- Project Management
- Construction
- Budgets

www.gregevanismg.com
Call: 07951 157208 or email: gregevanismg@gmail.com

GOLF COURSE MANAGEMENT

 **Billy McMillan Associates Ltd**

Golf Course Management Consultant

Golf Course Advice;
Locum Greenkeeper Service;
Project Management; Practical
Solutions for Genuine Problems

www.billymcmillanassociates.co.uk
Tel: 07774 632747

MACHINERY

Toro Reelmaster 5010-H with PowerMatch

Horsepower on Demand

www.toro5010.com 

EQUIPMENT

 **Wiedenmann**

Bringing technical excellence and service to turf and groundcare

www.wiedenmann.co.uk
0141 814 3366

Golfing Nobody's Blog

All hail my friends and colleagues at the Honourable Company of Edinburgh Golfers!

I know they have been described as dinosaurs but I see them very much as a modern day version of King Canute and the Suffragette Movement. These guys had a belief and a cause and, my heavens, they have stuck to it despite the massed weight of public opinion and, let's face it, reason standing in their way.

They knew the consequences of standing by their point of view. They knew

that they would be viewed with complete contempt and disdain by the rest of the free thinking world but they stood tall, glass of Kummel in hand, didn't waver, and voted against women joining them as members of their club.

Yes, I can see the reasoning behind equality. If you think about it closely, there is quite a bit to say for it. But surely the thought of the steward having to stock up on sweet sherry and having lavish flower arrangements obscuring the view

of the 18th green from the main bar would be enough to have all but the most liberal thinking man-about-town edging towards the boxed mark "Over My Dead Body".

Don't get me wrong, I'm all for the mixing of the sexes when and where appropriate. Ballroom dancing classes is one which springs to mind. While I don't see anything wrong with pursuits like bridge, recreational cycling and Caribbean cruises being enjoyed equally by both sexes – at the same time. But golf!

It is the sporting equivalent of teaching your partner to drive. They may be able to parallel park by the end of it but there is every chance that you won't reach your next significant wedding anniversary.

How often have we had to utter the following words through gritted teeth in the Gruesome Foursomes? "Don't worry, dear. I'm sure we can still rescue a 6.", just when she's failed to find the 10 yard wide strip of short grass, conveniently cut through the carry from the Ladies' Tee to the fairway, and left you in a nearby bush, a mere 410 yards from the green.

Golf is supposed to be a pleasurable pursuit but when the Pro starts giving classes in on course diplomacy, as well as etiquette, the cracks in male-female golfing relations have gone that little bit too far.

So I would like to applaud those brave gentlemen of the Honourable Company for voting with their consciences and not being railroaded into doing what is considered by some to be what's right.

But at what cost? Well, to some it may not even be a cost but a benefit. No longer will they have to turn their club over to the R&A every 10 years and have all those garishly dressed, flat bellied pros invading their course for a couple of weeks and – worse – have members of Joe Public trampling around, discarding burger wrappers and coke cans in unsightly wheelie bins and shouting "Get in the Hole!".

No, members will no longer have to check their calendars to see which third week in July they will have to call their mates at the Royal Burgess Club to fit them in for a game. The tranquil life of the Muirfield member will be allowed to continue uninterrupted.

Honourable in Name. Honourable in Action.

**As told to Scott MacCallum*



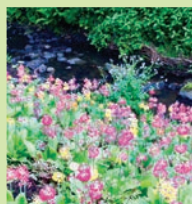
as seen on
TWITTER



Wimbledon Groundsman @AELTCGroundsman Is there a better sight than 12 months of hard work coming to fruition? #practiceweek

Pitchcare @Pitchcare If you have @instagram check out our page: https://www.instagram.com/pitchcare_hq/ for a behind the scenes look at what we get up to! #instagram #turf

IOG SALTEX @IOG_SALTEX We are delighted to announce that Turfcare will be returning to @the_iog #SALTEX16!



The RHS @The_RHS Read our latest blog about the whirlwind that was the 1st ever @RHSHarlowCarr Flower Show! <http://www.rhs.org.uk/gardens/harlow-carr/harlow-carr-blogs/harlow-carr/June-2016/Basking-in-the-show-s-success...>

John Deere @JohnDeere What's new in planting? See for yourself in our 2016 planting video. Then visit your dealer. <http://bit.ly/28RjJwM>



Mahoney Golf Academy @MahoneyAcademy Full house for today's Trackman Clinic. Club head speed. @Troon @club_cordillera #results

Bayer Crop Science @Bayer4CropsTo sustain #weedcontrol, check out our global initiative "Diversity is the Future". <http://bit.ly/IWMbestprc> #Weedcontrol #IWSC2016

Follow Scott MacCallum on Twitter @TurfMatters



Tea Break Teaser answers

1. Todd Hamilton (2004); Justin Leonard (1997); Mark Calcavecchia (1989); Tom Watson (1982); Tom Weiskopf (1973) and Arnold Palmer (1962); 2. Old Course, St Andrews; Carnoustie; Turnberry; 3. 1923; 4. 8th; 5. Gene Sarazen; 6. Ayrshire; 7. Bobby Locke; 8. Ben Curtis; 9. Colin Montgomerie; 10. Peter Oosterhuis; 11. It was the first time a four hole play-off had been used in a Major; 12. Greg Norman; 13. Ernie Els; 14. 1970s; 15. Andrew Cotter.

For all sports turf
professionals in
golf, football,
rugby, cricket,
horse racing,
independent
schools,
universities and
local authorities...

Because, after all,

TURF **MATTERS**

To advertise, contact **Scott MacCallum**

Email: scott@turfatters.co.uk





TORO

The Toro® Groundsmaster range with SmartPower™

The Smart Choice

SmartPower™ from Toro gives you dramatic efficiency savings on our GM4000 Series – without compromising on performance.



Acting as the 'brains' of the machine, Toro's revolutionary SmartPower system automatically controls mowing speed according to ground contours and terrain for optimum cutting performance.

It means all four mowers in our 4000-D Series rotary range can now offer dramatic savings in fuel and running costs without compromising on productivity and performance. In particular SmartPower prevents bogging down in heavy turf to provide an unmatched quality of cut even in difficult conditions. What's more – the 48hp engine options comply with new EU emissions rules for non-road vehicles. It all makes it the smart choice.

Full product details at www.toro.com

Put us to the test. For a free onsite demonstration, call Lely on 01480 226800



With the revolutionary SmartPower technology

- ▶ Intelligent power use
- ▶ Automatically controls mowing speed
- ▶ Prevents bogging down
- ▶ Reduces fuel and running costs
- ▶ Complies with EU emissions regulations



GROUNDMASTER 4000-D

GROUNDMASTER 4100-D

GROUNDMASTER 4500-D

GROUNDMASTER 4700-D



Lely. Your partners in turfcare. Call 01480 226800.

Lely Turfcare not only brings you Toro. Talk to us, too, about TYM compact tractors and Otterbine water management systems.



partners in turfcare

Toro Commercial Products are distributed by Lely Turfcare, St. Neots, Cambridgeshire PE19 1QH. Tel: 01480 226800 | Email: turfcare.sales.uk@lely.com | www.lelyturfcare.co.uk | www.toro.com